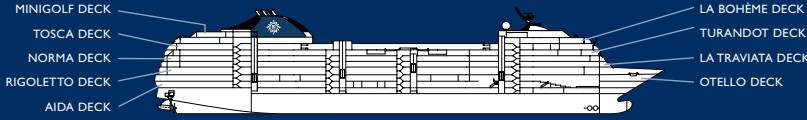


MSC OPERA



ACCOMMODATIONS

1	Interior
2	Interior
3	Interior
4	Interior
5	Interior
6*	Oceanview
7	Oceanview
8	Oceanview
9	Oceanview
10	Balcony
11	Balcony Suite

* Certain staterooms have obstructed views

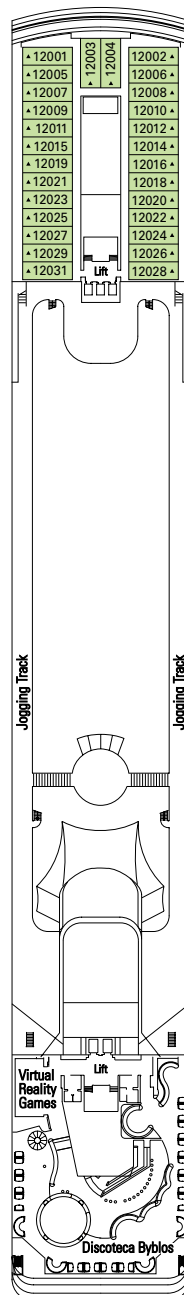
STATEROOM SYMBOLS KEY

- ▲ Sofa bed
- 3rd bed is a bunk bed
- 3rd & 4th beds are bunk beds
- ◆ Double sofa bed
- ┌ Connecting staterooms
- H Disabled stateroom
- 3rd bed available in CAT: 1, 2, 3, 4, 7, 8, 9, 11
- 4th bed available in CAT: 1, 2, 3, 4, 8, 9
- All staterooms are two single beds convertible to a European king size bed except disabled staterooms (H)

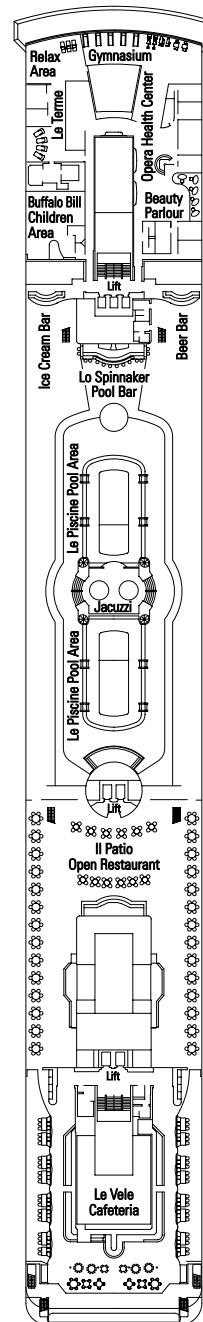
SHIP DETAILS

Gross Tonnage: 59,000
 Guests: 1,712 (DOUBLE OCCUPANCY)
 Total Guests: 2,055
 Staterooms: 856
 Crew: approx 700
 Launch Date: 2004
 Speed: 19.5 KNOTS
 Length: 824 FT
 Beam: 92 FT
 Current: 110/220 VOLT

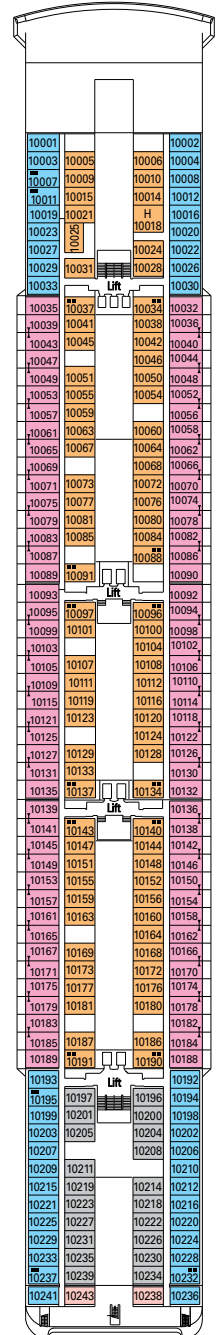
DECK 12 LA BOHÈME



DECK 11 TOSCA



DECK 10 TURANDOT

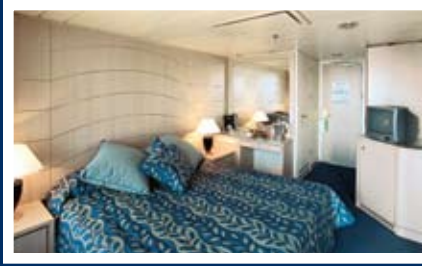




BALCONY SUITES & STATEROOMS

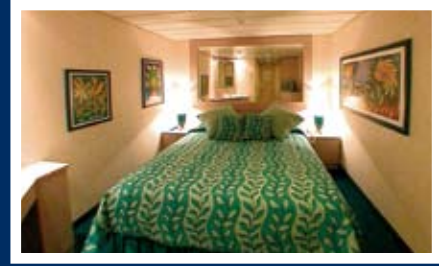
Category 11: 28 Balcony Suites
302 SQ FT (248 SQ FT SUITE + 54 SQ FT BALCONY)

Category 10: 172 Balcony Staterooms
183 SQ FT (140 SQ FT SUITE + 43 SQ FT BALCONY)



OCEANVIEW STATEROOMS

Categories 6, 7, 8, 9: 295 Oceanview Staterooms
140 SQ FT

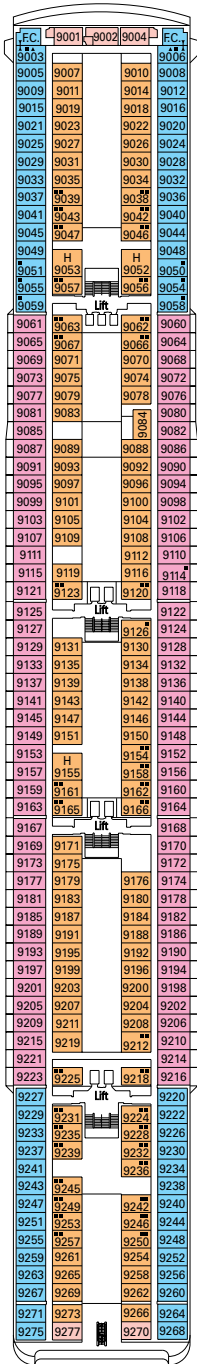


INTERIOR STATEROOMS

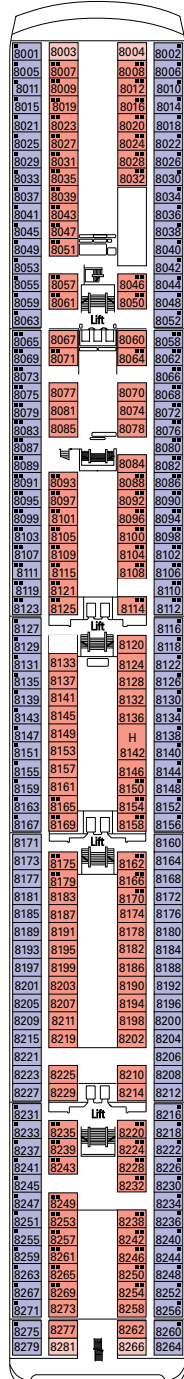
Categories 1, 2, 3, 4, 5: 359 Oceanview Staterooms
140 SQ FT

Including 5 wheelchair accessible staterooms measuring 226 SQ FT – Categories 3, 4

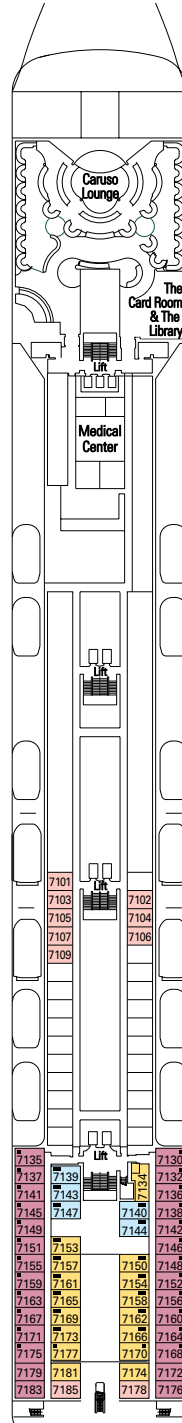
DECK 9 NORMA



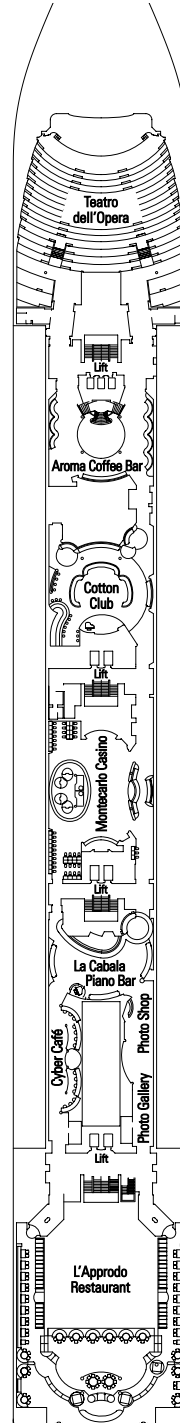
DECK 8 LA TRAVIATA



DECK 7 RIGOLETTO



DECK 6 OTELLO



DECK 5 AIDA

